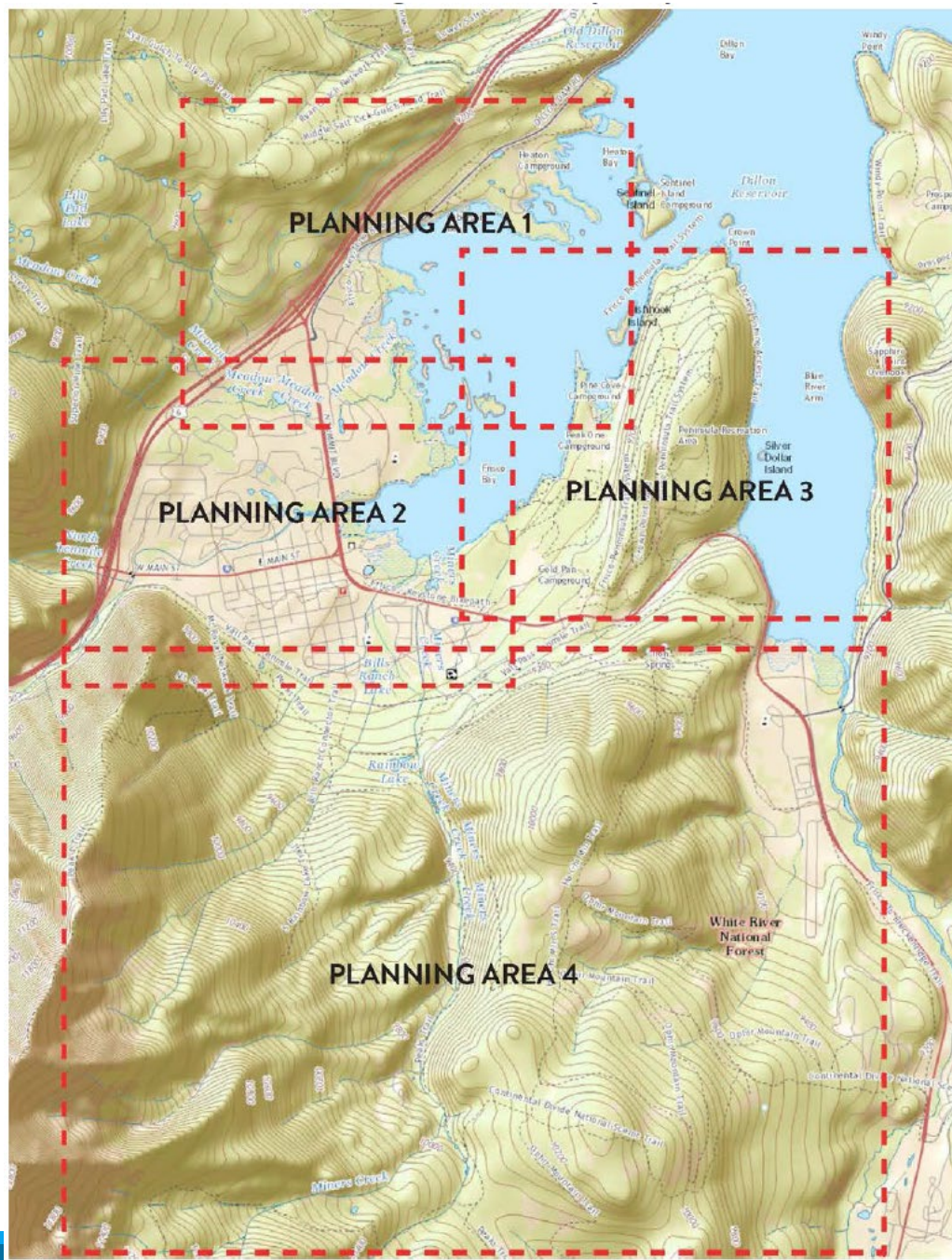




Frisco Trails Master Plan

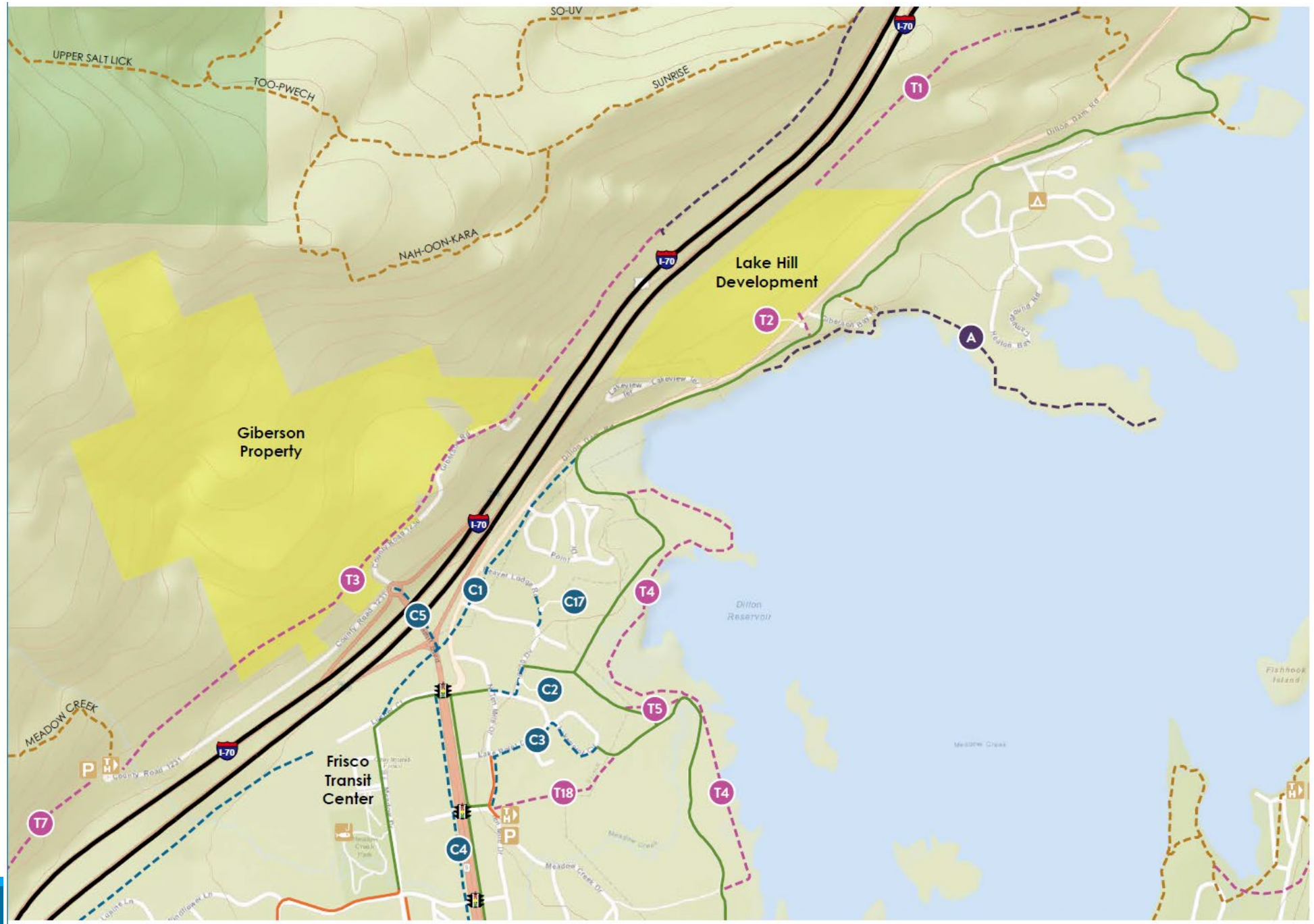
SUSAN LEE/PETE SWENSON



Frisko Trails Master Plan Goals

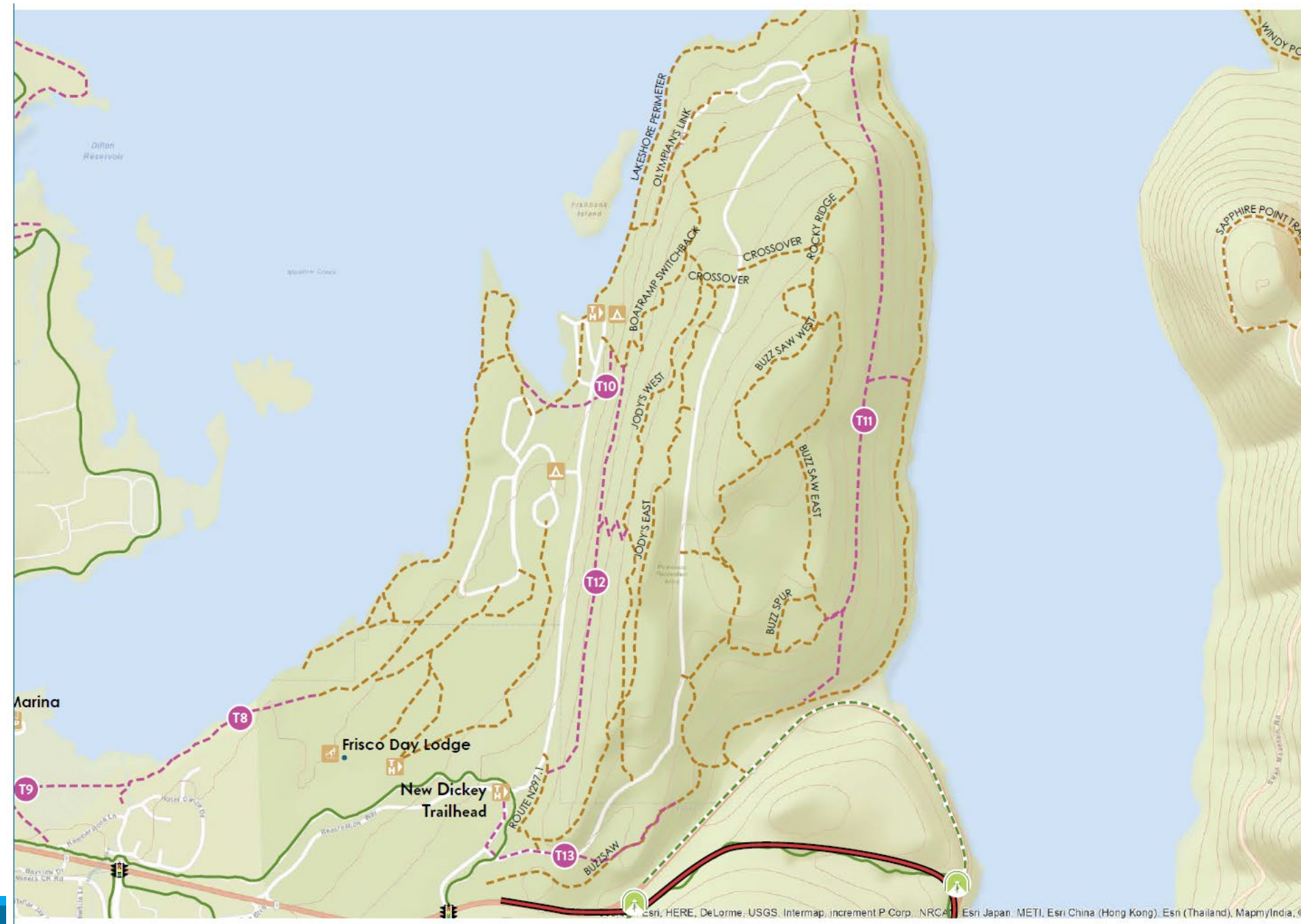
- 1) Partner proactively with the USFS on the maintenance of existing trails; rehabilitation, restoration, re-routing or abandonment of unsustainable trails; and the development of new trails on NFS lands surrounding the Town of Frisco.
- 2) Add trails that create access to other trails and the Rec Path system. By creating new access points, Frisco and its surrounding area become a true "network" where the public can get from one place to another without a car.
- 3) Make Frisco a safe place to people of all ages and abilities to walk, bike, and cross the street. Prioritize access for people over access for vehicles.
- 4) Design and implement a new wayfinding and signage program that gives users distance and direction to key destinations, is placed at appropriate intervals and intersections, and is branded and linked with the Town of Frisco.
- 5) Make trailheads inviting places where trail users can gather information for their recreation experiences.

Planning Area 1



The map displays the Frisco area in Texas, highlighting the Frisco Transit Center and Frisco Elementary School. It shows a network of roads, including I-70 and I-375, and a proposed transit route marked with colored lines and station numbers (C1 through C20). The map also includes geographical features like the Superior Mine and Mount Royal, and various trails such as the Frisco Day Lodge and Frisco Elementary School. The transit route is shown in a network of colored lines (red, blue, green, orange, purple) connecting various stations and landmarks.

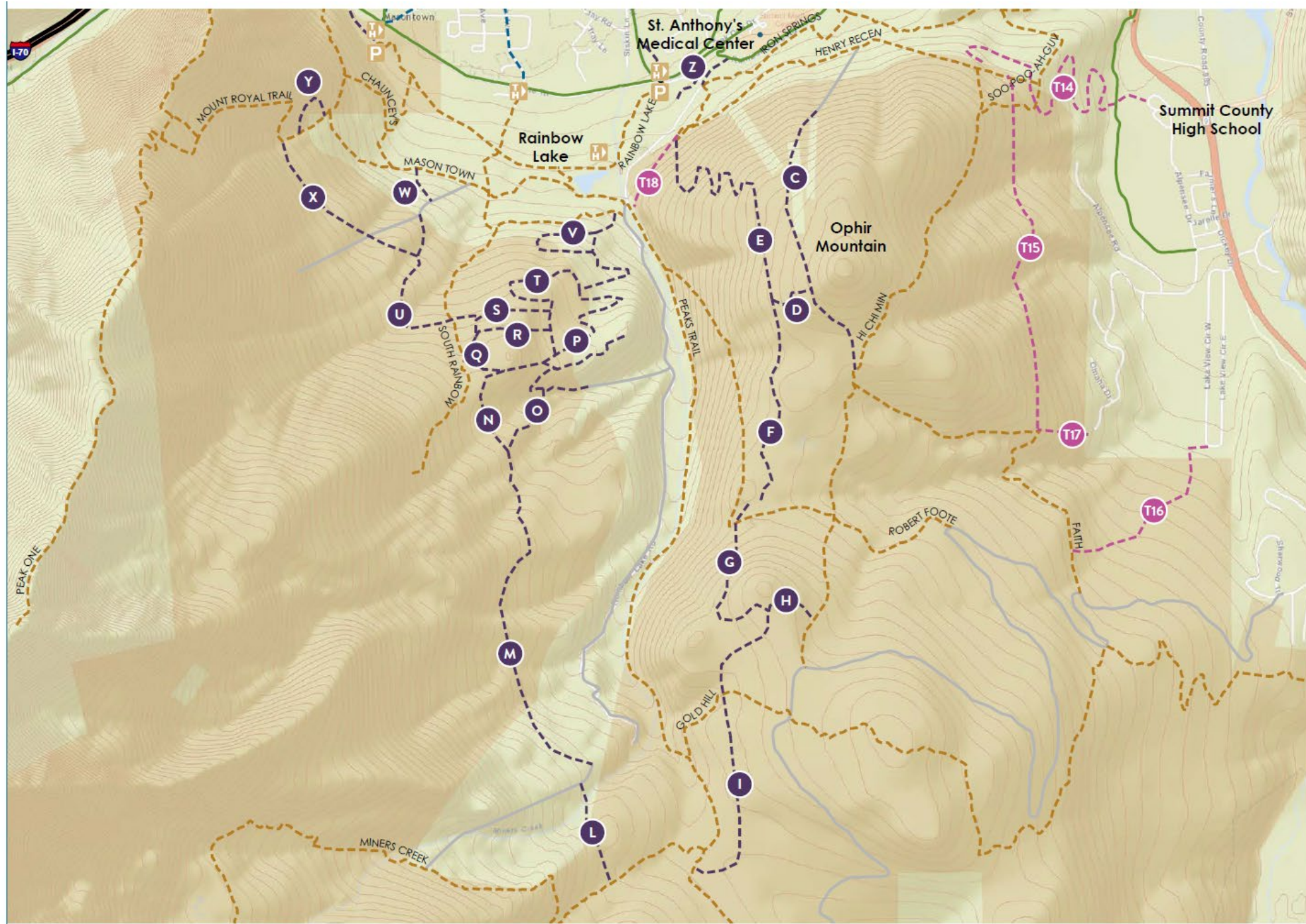
Planning Area 3



Planning Area 3



Planning Area 4



Future Priorities

Project Prioritization Matrix

Planning Area	Project	Cost	Safety Value	Access Value	Community Priority	Score
1	A	\$\$	1	2	1	4
	T1	\$\$	1	1	1	3
	T2	\$\$\$	2	2	2	6
	T3	\$\$\$	1	3	3	7
	T4	\$\$	1	2	3	6
	T5	\$	2	1	1	4
	T18	\$\$	1	2	2	5
	C1	\$\$\$	3	3	3	9
	C2	\$	1	2	2	5
	C3	\$	2	2	2	6
	C4	\$\$	3	3	3	9
	C5	\$\$	3	3	3	9
	C17	\$\$	2	3	2	7
	B	\$\$	1	2	2	5
	T6	\$\$	1	3	2	6
	T7	\$\$\$	2	3	3	8
	T19	\$\$	1	2	2	5
	C6	\$\$\$	3	3	3	9
	C7	\$\$	2	3	2	7
2	C8	\$	1	1	1	3
	C9	\$	2	2	2	6
	C10	\$\$	2	2	2	6
	C11	\$	2	2	3	7
	C12	\$\$	3	3	3	9
	C13	\$	2	2	2	6
	C14	\$	2	2	2	6
	C15	\$	1	1	2	4
	C16	\$	1	2	2	5
	C17	\$\$	3	3	3	9
	C18	\$\$	3	2	2	7
	C19	\$\$	3	2	2	7

Planning Area	Project	Cost	Safety Value	Access Value	Community Priority	Score
3	T8	\$\$	2	2	3	7
	T9	\$\$	2	2	3	7
	T10	\$	1	1	1	3
	T11	\$\$	1	1	1	3
	T12	\$\$	1	1	1	3
	T13	\$\$	2	2	3	7
	T14	\$\$	1	2	2	5
4	T15	\$\$	1	2	3	6
	T16	\$\$	1	2	2	5
	T17	\$\$	1	2	1	4
	C	\$\$	1	2	1	4
	D	\$\$	1	2	1	4
	E	\$\$	1	2	1	4
	F	\$\$	1	2	2	5
	G	\$\$	1	2	2	5
	H	\$\$	1	2	1	4
	I	\$\$	1	2	1	4
	L	\$\$	1	2	3	6
	M	\$\$	1	2	3	6
	N	\$\$	1	2	3	6
	O	\$\$	1	2	3	6
	P	\$\$	1	2	3	6
	Q	\$\$	1	2	1	4
	R	\$\$	1	2	1	4
	S	\$\$	1	2	1	4
	T	\$\$	1	2	2	5
	U	\$\$	1	2	2	5
	V	\$\$	1	2	2	5
	W	\$\$	1	2	2	5
	X	\$\$	1	2	2	5
	Y	\$\$	1	2	2	5
	Z	\$\$	1	2	2	5